

Foamed rubber sheet

Our foamed rubber sheets contain open cell foamed rubber sheets and close cell foamed sheets. Foamed rubber sheets include three series depending on different material. There are EPDM series, NBR/PVC series and NBR foamed sheet. Different material is suitable for different use.

EPDM series are divided into 6 kinds, including EDK-15 (Close Cell foamed sheet), EDK-10(Open Cell), EDK-10W (Open Cell) color is white, EDK-10V (Open Cell), EDK-10F (Open Cell), and EDK-20 (Open Cell).

Our company owns a forerunner of the craft technique and machine process an equipments, the product is popular domestic and international market. Have already become EPDM to open to shut a bore product, NBR/PU to open to shut series products, such as the bore product and each kind of color sport mat material...etc. now.

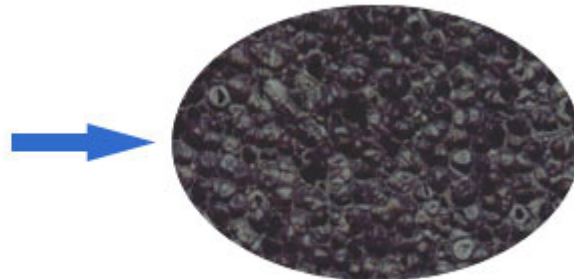
The product has a heat preservation and heat protection, quakeproof, sound absorption and seal completely, obstruct burnable etc. characteristic, extensively applied in the air condition, automobile, construct, instrument appearance, pack, electronics, the athletics sport etc. profession.

Our development is very good. We have the capability to provide you with a lot of different material for foam sheet, such as **NBR EPDM NR PU CR** range. Besides, we have the RosH & ISO9001 MSDS etc certificate. Our sample can be available before ordering. The sample delivery time is general: about 2-3 weeks. You will place the first order after checked our quality.

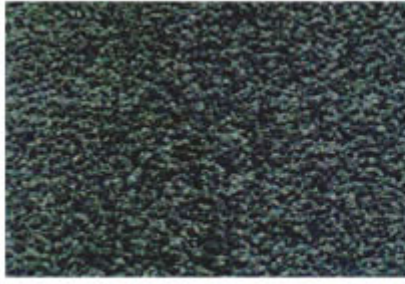
EPDM series:



EDK-20



放大图



EDK-10



放大图



EDK-10F



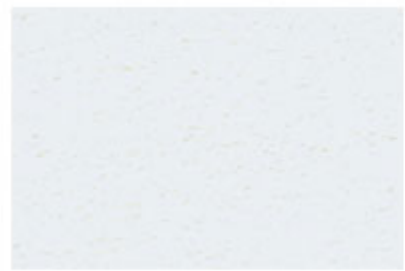
放大图



EDK-10V



放大图



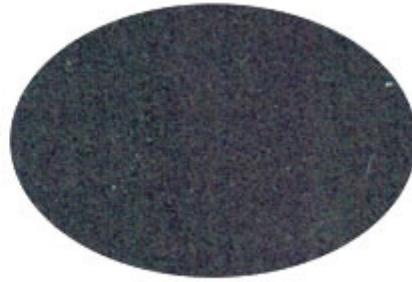
EDK-10W



放大图



EDK-15



放大图

No. EDB-15 (CLOSE CELL) ★ The Most Popular

MAXIMUM SIZE: 40x1000x2000 MM

DENSITY: 110-170 KG/M³

TENSILE STRENGTH: ≥ 200KPA

ELONGATION: ≥ 150%

COMPRESSION SET: ≤5.0

INSPECTION STANDARD: SGS

STANDARD COLOR: BLACK

No. EDB-16 (CLOSE CELL)

MAXIMUM SIZE: 40x1000x2000 MM

DENSITY: 180±10 KG/M³

TENSILE STRENGTH: ≥ 0.6 MPA

ELONGATION: ≥ 120%

COMPRESSION SET: ≤8.0

INSPECTION STANDARD: JIS

STANDARD COLOR: BLACK

No. EDK-10 (OPEN CELL) ★ The Most Popular

MAXIMUM SIZE: 55x1000x2000 MM

DENSITY: 80-120 KG/M³

TENSILE STRENGTH: ≥ 50KPA

ELONGATION: ≥ 150%

COMPRESSION SET: ≤5.0

INSPECTION STANDARD: SGS

STANDARD COLOR: BLACK

No. EDK-10W (OPEN CELL, Inflammation Retarding)

MAXIMUM SIZE: 45x1000x2000 MM

DENSITY: 80-120 KG/M³

TENSILE STRENGTH: ≥ 50KPA

ELONGATION: ≥ 150%

COMPRESSION SET: ≤5.0

INSPECTION STANDARD: SGS

STANDARD COLOR: WHITE

No. EDK-10F (OPEN CELL, Inflaming Retarding)

MAXIMUM SIZE: 45x1000x2000 MM

DENSITY:80-120 KG/M³

TENSILE STRENGTH: ≥ 50KPA

ELONGATION: ≥ 150%

COMPRESSION SET: ≤5.0

INSPECTION STANDARD: SGS

STANDARD COLOR: WHITE

No. EDK-20 (OPEN CELL, Big Cell)

MAXIMUM SIZE: 20x700x3000 MM

DENSITY:60-120 KG/M³

TENSILE STRENGTH: ≥ 50KPA

ELONGATION: ≥ 150%

COMPRESSION SET: ≤3.0 (25%,23°C,22h)

INSPECTION STANDARD: SGS

STANDARD COLOR: BLACK

No. EDK-10V (OPEN CELL, Small Cell)

MAXIMUM SIZE: 45x1000x2000 MM

DENSITY:60-120 KG/M³

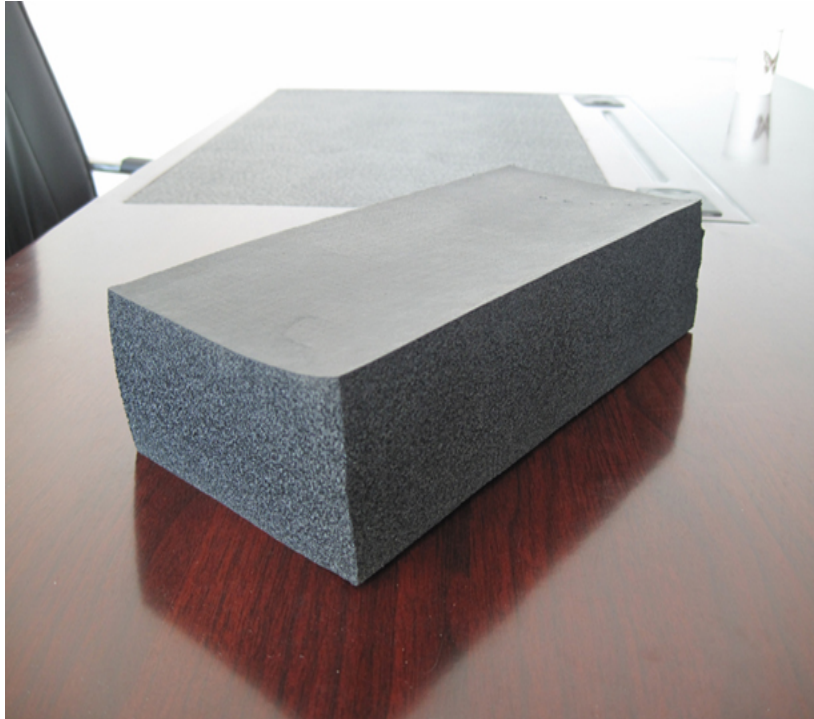
TENSILE STRENGTH: ≥ 50KPA

ELONGATION: ≥ 150%

COMPRESSION SET: ≤3.0 (25%,23°C,22h)

INSPECTION STANDARD: SGS

STANDARD COLOR: BLACK



EDK-10 EPDM OPEN CELL (Active demand)



EDK-10W EPDM OPEN CELL (Color: White)



Goods Packing



EDK-15 CLOSE CELL

(Active demand)

EDK-20

(OPENCELL)



Technical Data:

GRADE	CELL STRUCTURE	DENSITY	TENSILE STRENGTH	TENSIBILITY	COMPRESSED PERMANENCE DISTORTION (50%,23°C,72h)	USE TEMPERATURE	REMARK	
		kg/m ²	kpa	%	%	°C		
EPDM Series	EDK-15	CLOSE CELL	110-170	≥200	≥150	≤5.0	-40~+150	SGS Certification
	EDK-10	OPEN CELL	80-120	≥50	≥150	≤5.0	-40~+150	SGS Certification
	EDK-10W	OPEN CELL	80-120	≥50	≥150	≤5.0	-40~+150	SGS Certification White
	EDK-10F	OPEN CELL	80-120	≥50	≥150	≤5.0	-40~+150	SGS Certification FR
	EDK-20	OPEN CELL	60-120	≥50	≥150	≤3.0 (25%,23°C,22h)	-40~+150	ULHF-1 Quite SGS Certification
	EDK-10V	OPEN CELL	60-120		≥150	≤3.0 (25%,23°C,22h)	-40~+150	SGS Certification Kong Small

